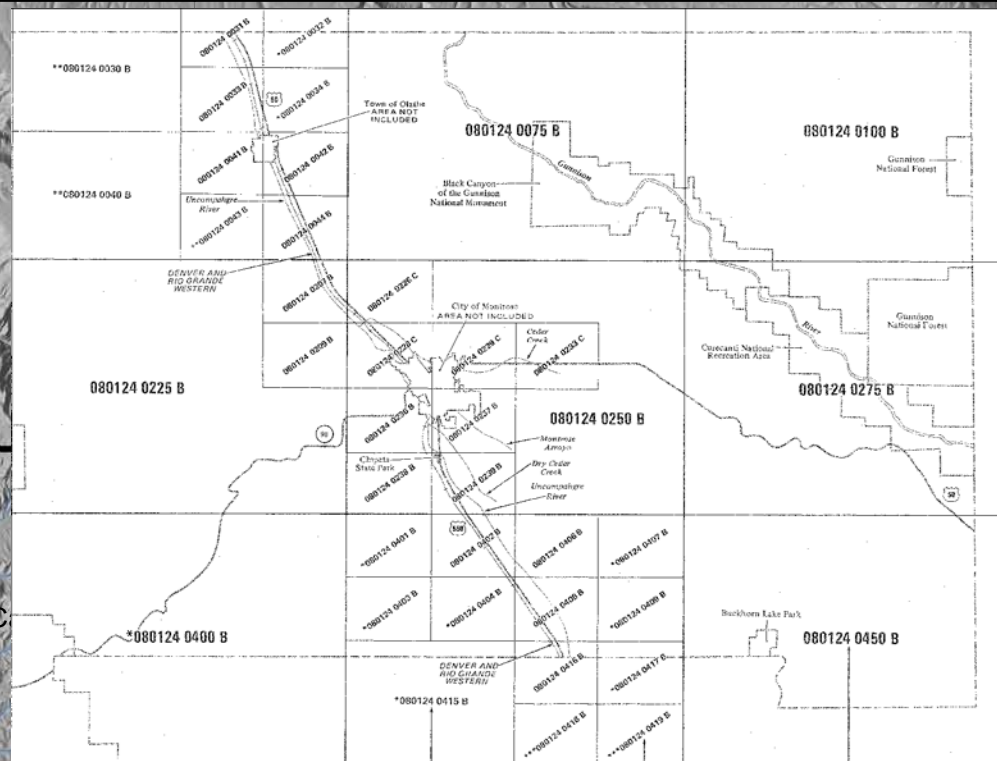
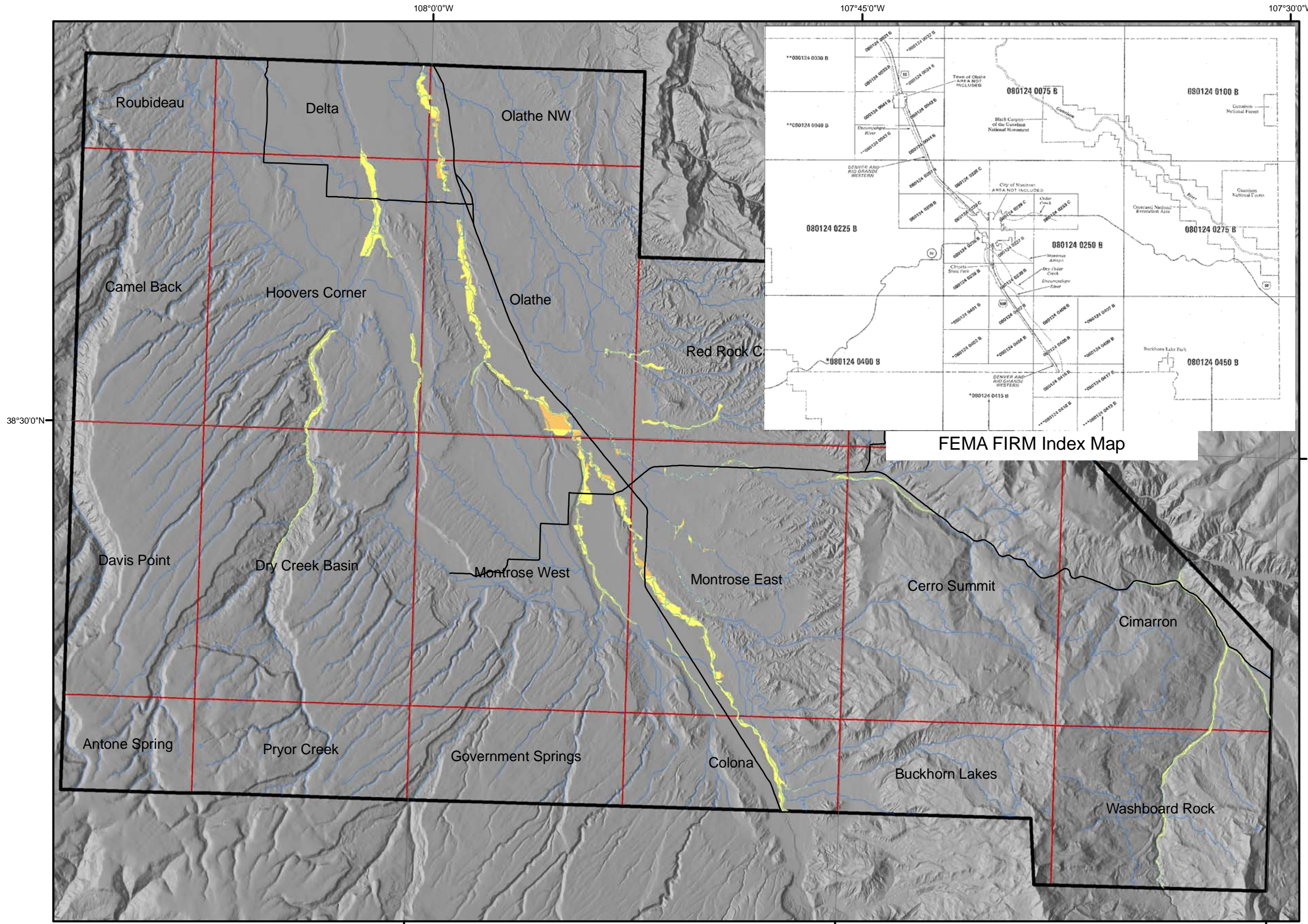


# Montrose County Geological Hazard Mapping Project Compiled FEMA Flood Insurance Rate Maps (FIRM)



FEMA FIRM Index Map

**Disclaimer:** The FEMA Flood Insurance Rate Map (FIRM) zones were digitized from scanned map images shown in the FEMA index map in the upper right corner. Those maps have effective dates of 1984 and 1986. These scans were georeferenced as best that could be done with the limited reference data that are shown on the FIRMs. Spatial errors were noted on the FIRMs during georeferencing of the maps. Physical changes were also noted in flood channels when compared to recent aerial photography.

Gaps in the availability of FEMA FIRMs occur. Paper copies of the FIRMs with asterisks before the ID number are not available. The FIRMs for within the town limits of Olathe (Map ID No. 0801280001B) and Montrose (Map ID No. 0801250001C) are not included in this coverage. FIRMs are available at the FEMA Map Service center at: [www.msc.fema.gov](http://www.msc.fema.gov)

**Legend**

**Floodplain**

- Zone A- 100 Year
- Zone B- 500 Year
- Major highways
- Rivers and major irrigation canals
- Project Boundary
- Topographic Quad Boundaries, 1:24,000-scale

This mapping was funded jointly by FEMA Pre-Disaster Mitigation funds, Montrose County, and the Colorado Geological Survey (CGS) using the Colorado Department of Natural Resources Severance Tax Operational Funds.

The FEMA Award No. 6EM75C44 to Montrose County is managed by the Colorado Division of Emergency Management as part of the Colorado State Multi-hazard Mitigation Plan. The CGS matching funds come from the severance tax paid on the production of natural gas, oil, coal, and metals.



Scale  
1:205,000  
1 inch = 3.24 miles

0 0.5 1 2 3 4 Miles

FEMA flood maps compile and digitized by S. Gaffney and J. White, CGS  
Hillshade created from USGS 10-m DEM



Bill Ritter Jr., Governor  
State of Colorado

Harris D. Sherman, Executive Director  
Department of Natural Resources

Vincent Matthews  
State Geologist and Division Director  
Colorado Geological Survey